

Primer catcher

For RCBS Partner Press

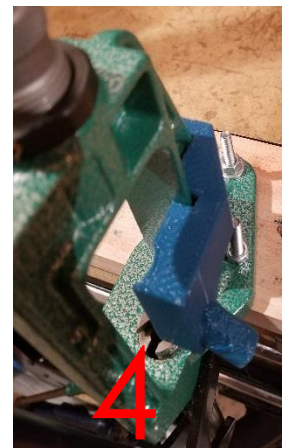
Congratulations to your new and improved primer catcher. Not only the larger capacity, or the option to let the spent primers directly drop into a waste basket, but also easier installation and removal and - if you ask us - a much better looking design are in your hands.

- Sturdy
- Easy to install
- Easy to remove
- Large capacity
- Option to drop primers directly into trash bin
- Inexpensive

and...

This primer catcher comes with a lifetime warranty: If it breaks during normal use and we still produce it, send us the broken one and we will replace it for free, no questions asked.

The installation is straight forward. Simply follow these steps (you simply slide it on the press from the top):



Contact information

For any questions concerns and replacements, please reach out to us via e-mail or if you need a replacement, simply ship your defective product to the address below (please make sure your name and address is included).

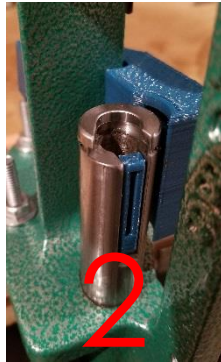
Primercatcher
Attn. Tom
6451 Ashley Oaks Ct.
West Chester, OH 45069
USA

e-mail: info@primercatcher.com

This is the optional installation of the small piece that blocks the front slot in the presses ram. You first remove the shell holder and then simply slide the little plastic part in place so the upper part is slightly below the cutout for the shell holder. After that, put the shell holder back in place and you are ready to go...

There is a spare one coming with your order should you ever lose it or break it. To remove it, simply push it out (a screw driver or nail mail help, it is also easier to remove without a shell holder in place).

The installation is straight forward. Simply put in on the press like this:



Done

Decapping Die Installation

First, run the ram to the top of the reloading press stroke with the shell holder installed, then screw the resizing die into the press until it stops against the shell holder. Now to remove all play, lower the ram and turn the die 1/8 to 1/4 turn farther in. Check the adjustment by returning the shell holder to the top of its stroke--you should feel the press cam over center. Now set the large lock ring and your die is adjusted to properly full length resize cases and will work nicely with the primer catcher.

It is also important that the decapping pin is only far enough out to just push the spent primers out (about 3/16"). Further out and you may not catch all primers as chances that primers stick to the pin are getting higher!